

NW 1/4  
**SECTION 8, T.6N., R.2W., S.L.B. & M.**

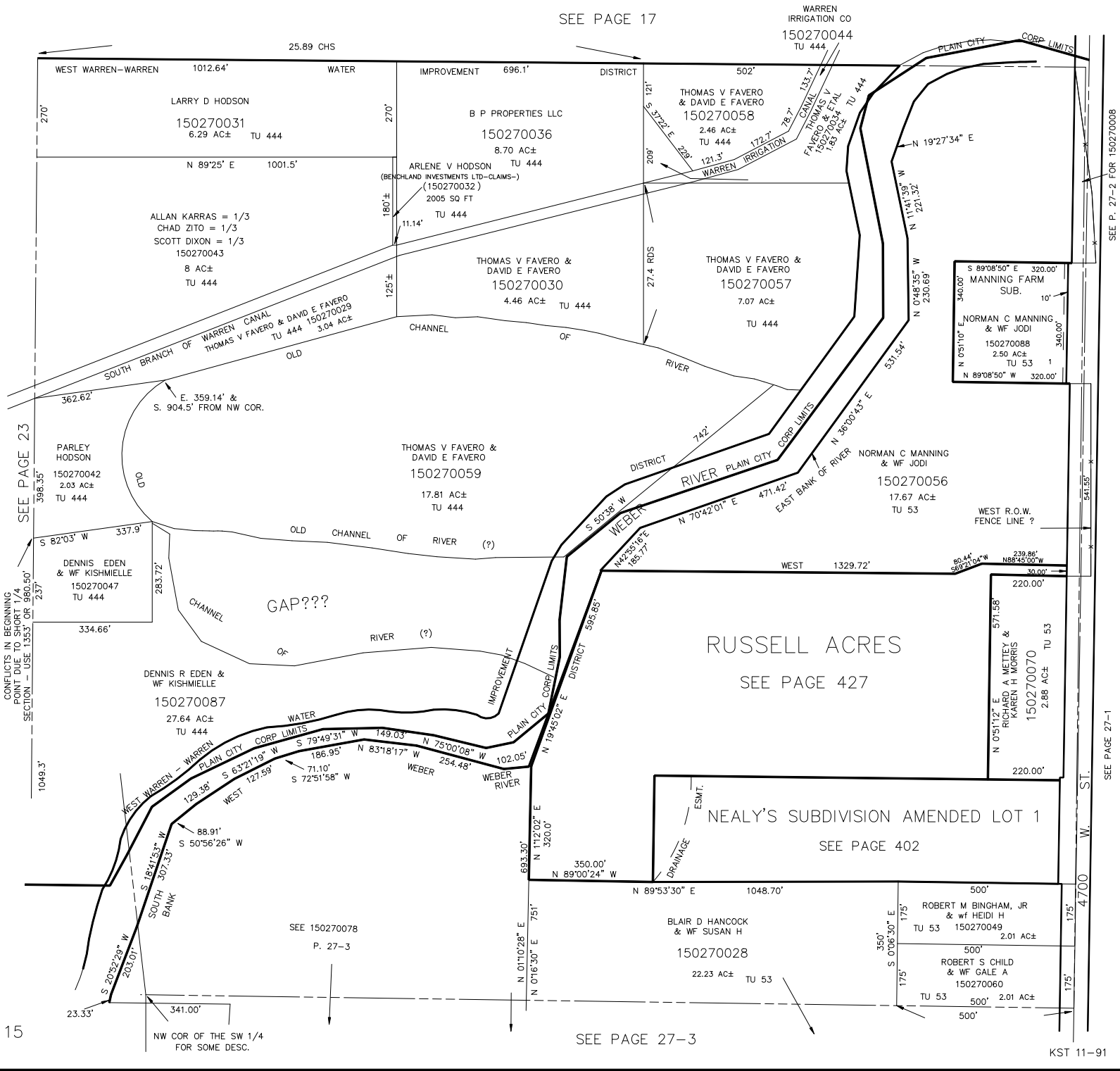
27-4

IN WEBER COUNTY

SCALE 1" = 200'

TAXING UNIT: 53, 444

SEE PAGE 17



SEE PAGE 23

CONFLICTS IN BEGINNING POINT DUE TO SHORT 1/4 SECTION - USE 135.3' OR 960.50'

15

SEE PAGE 27-3

SEE P. 27-2 FOR 150270008

SEE PAGE 27-1

KST 11-91